

**GARLAND CHAMBER OF COMMERCE**  
**Annual Report**  
**2013**



**KEEPING**  
**YOU** **CONNECTED**



# THE CONNECTING SOURCE

Milestone Moments in 2013.....	2
Sharing Our Statistics.....	4
Growth in Garland, Economic Development.....	5
Exciting Events in 2014.....	6

**Vision:** The greater Garland community will enjoy a sustainable high quality of life with a vibrant and varied business environment.

**Mission:** As servant leaders and a role model of performance excellence, the Chamber is the trusted unifying force that acts as the catalyst for positive change in the greater Garland community.



# MILESTONE MOMENTS

**JUNE 5** Eastfield College, GISD, Remington College, Richland College, Texas Veterans Commission, Workforce Solutions Greater Dallas, Express Employment and PDO Temporaries joined the manufacturing companies represented on the DCMA Steering Committee to discuss resources and needs for the Garland workforce.

This process began the conversation about how to adequately and effectively equip Garland students for manufacturing careers. The committee expects to continue its collaboration with local educational institutions and proceed with initiatives in 2014.

**JAN. 2** Rowena Biermann's first day as the Chamber's Office Manager

## CELEBRATING 25 YEARS OF MEMBERSHIP (OR MORE)

Roach Feed & Seed, Inc.  
 Davis-Dyer-Max, Inc.  
 Feagin Motor Co.  
 Bryant Printing Co.  
 Garland Independent School District  
 Browning's Trophies  
 Woody Brownlee  
 Eastfield College  
 General Dynamics OTS  
 The Valspar Corporation  
 Siciliano's A Taste of Italy  
 Automatic Products Corp.  
 Stephen Hill, Attorney  
 Satelink, Inc.  
 Verizon

Sherwin Williams Co.  
 Citibank, N.A. - Beltline Road locations  
 Garland Concrete  
 Jupiter Chevrolet, Inc.  
 Micropac Industries, Inc.  
 The Braga Law Firm, P.C.  
 Tom Thumb-Page Food & Drug Center  
 Clopton & Company, CPA  
 Executive Press, Inc.  
 Country Brook Animal Hospital  
 Dallas Co. Commissioner - Mike Cantrell  
 Wal-Mart Corporation  
 Lisa A. Garner, M.D.  
 Thomas A. Reed, DDS



**JULY 16** Garland Chamber of Commerce launched the redesigned, vibrant, user-friendly website at [www.garlandchamber.com](http://www.garlandchamber.com)



**OCT. 17** Hayley Hangartner's first day as the Chamber's Member Relations Representative

30 local manufacturing companies set a plan into motion to educate local employers about changes in health care laws and consider an initiative to offer on-site or near-site clinics with DCMA

ANNUAL BANQUET

More than 300 local professionals joined the Garland Chamber of Commerce for its 81st Annual Banquet on Jan. 31, 2013. Among the celebration of the year's many successes, recognition of community leaders and a glimpse of things to come in 2013, attendees had the unique opportunity to hear an inspiring and motivating message from Olympian and New York Times Best-Selling Author, Vince Poscente. Poscente had the audience on the edge of their seats and kept everyone laughing from start to finish in his presentation titled, "Building a Championship Organization."

The Chamber staff and Board of Directors extend their thanks to Bo Saavedra of Northwestern Mutual for sponsoring this year's annual meeting and extend congratulations to the following award recipients:

**Director of the Year:** Kevin Slay  
**Committee Chairman of the Year:** Tandy Dollar

**Chairman's Award:** Garland Chamber Staff  
**Tall Texan:** Dr. Curtis Culwell

BUSINESS EXPO

On April 18, 2013 from 9 a.m. to 2 p.m., more than 60 local businesses put products and services on display at the Garland Chamber's 4th Annual Business Expo.

After the success and growth seen in the past three years, the Expo relocated to The Curtis Culwell Center. The move allowed the event to accommodate additional exhibitors and attendees. This was also the first year for the Chamber to distribute tickets through various distribution points, giving community members a tangible reminder of the exciting event.

More than 500 community members looking to do business with local vendors, find services to better meet their needs or learn more about what the city of Garland has to offer found a wealth of information and resources at the Expo. As special, added bonuses in 2013, the Chamber hosted its vastly successful strategic networking event, Direct Connect, at the Expo venue at 8 a.m. as well as an educational workshop later in the day, which featured well-known speaker, Robin Creasman.

GOLF TOURNAMENT

The Garland Chamber of Commerce and title sponsors, Garland Power & Light and Plastipak Packaging, Inc., were pleased to host 304 golfers on the Lakes, Old and Bridges courses at Firewheel Golf Park for the 29th Annual Partnership Golf Tournament on Sept. 13, 2013. The implementation of a two-putt limit and the addition of a third course sped pace of play and allowed for tournament growth.

Casa Milagro provided a delicious lunch for golfers, volunteers, and community leaders at the pavillion following the tournament.

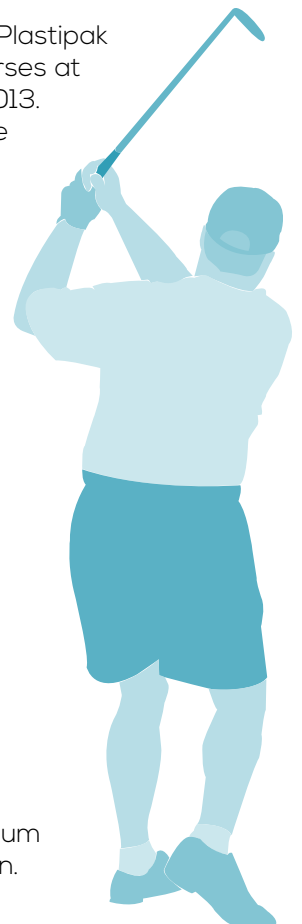
The Chamber extends its sincere gratitude to Scott McMurdie, Chairman of the Golf Advisory Committee, as well as each of the sponsors, volunteers and donors for their support.

PRAYER BREAKFAST

Harvey Oaxaca, former teacher and coach for the Garland Independent School District, joined more than 400 attendees at the 26th Annual Leadership Garland Prayer Breakfast on Dec. 5, 2013. Widely known for his service and leadership, Oaxaca shared his passion for community in a presentation titled, "Leadership Lessons From the Neighborhood."

In honor of Oaxaca's background in education, the Prayer Breakfast committee asked that attendees bring children's books to be donated to the Salvation Army. More than 150 books were collected at the event.

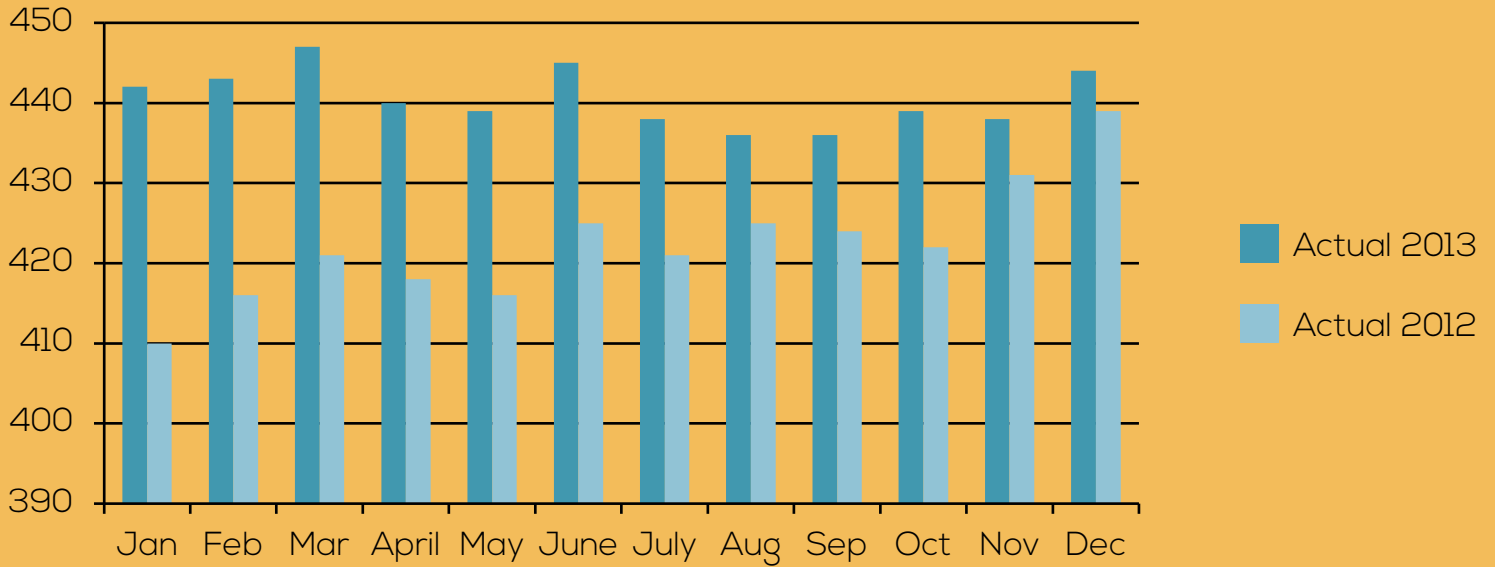
The event was moved back to its beautiful and festively-decorated home at The Atrium at the Granville Arts Center. Musical entertainment was provided by Jennifer Glidden.



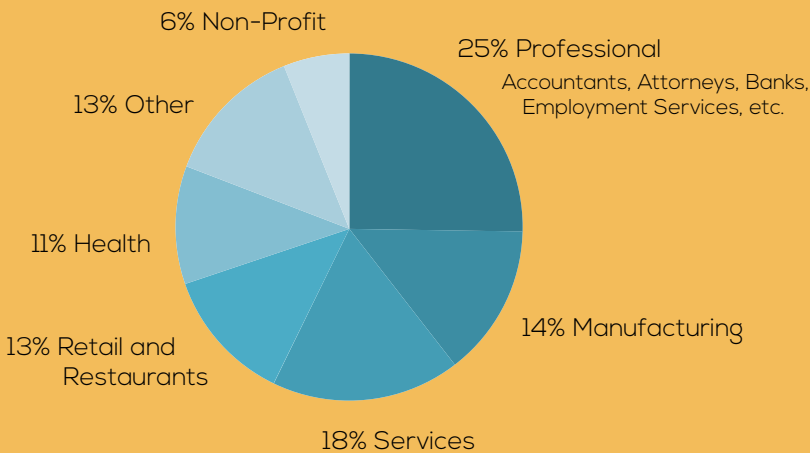


# SHARING OUR STATISTICS

## TOTAL MEMBERSHIP



## MEMBERSHIP CATEGORIES



## SMALL BUSINESS DEVELOPMENT CENTER COUNSELING

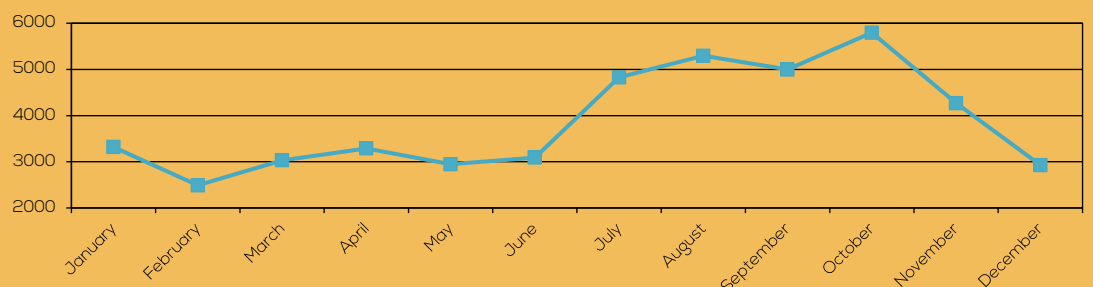
### Garland Outcomes for FY 2012-2013

Business Startups - 3  
 Jobs Created/Retained - 26  
 Capital Infusion - \$376,200

### North Texas Outcomes for FY 2012-2013

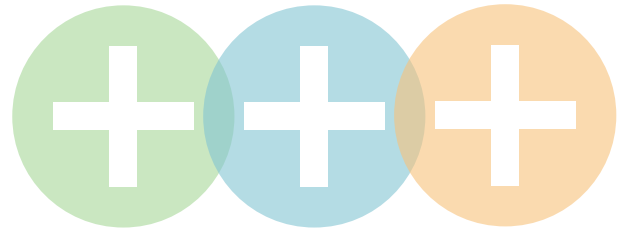
Business Startups - 331  
 Jobs Created/Retained - 1,651  
 Capital Infusion - \$96,502,023

## WEBSITE UNIQUE PAGE VIEWS (NEW SITE LAUNCHED IN JULY)



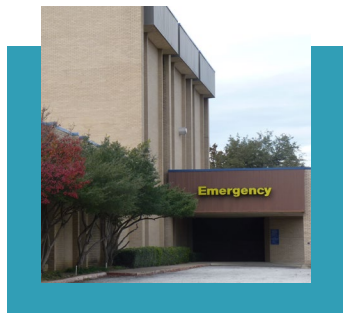
# ECONOMIC DEVELOPMENT

## 2013 Project Highlights



### Apex Tool Group

Formed in 2010 as a joint venture combining Danaher Tool Group and Cooper Tools, Apex offers industrial, commercial, and DIY customers a selection of more than 30 leading brands. The Garland plant plans to invest more than \$8 million in new machinery and property improvement.



### Sundance Hospital

Established in 2005, Sundance provides intensive outpatient psychiatric services to children, adolescents, and families in a safe, secure environment. The hospital plans to invest more than \$15 million to acquire and remodel the former Vista Hospital, a vacant medical building for the past 2 years. The hospital will also create more than 150 highly skilled jobs.

### Advanced Health Rehab Center

Advanced Health plans to build a new 65,000 sq. ft. facility on Colonel Dr. and move all staff and patients from the current building at 505 W. Centerville, originally Silver Leaves, which was built in 1969. The new facility will contribute an estimated \$11 million in new tax value. Thirty new staff members will be hired.

### Viking Fence Co. Relocation

This fence installation and fence supply company headquartered in Austin, Texas has been in business for more than 40 years. Since identifying the Dallas/Ft. Worth market as an opportunity for continued growth, it plans to build a 10,000 sq. ft. building and hire 20 people.

**GROWTH**  
**IN GARLAND** >>>

Tax Base Additions: \$94,580,000

Jobs Created: 1,213

New Company	Size (sq. ft.)
Auto Tech USA	21,500
Bay Insulation	31,500
Cali Saigon Mall	105,000
Cottage at Garland	23,000
Dallas Superstore	45,000
Fashion Home Furniture	23,000
Harmon, Inc.	66,500
IFCO Systems	66,000
Milestone Electric, Inc.	22,500
N. Wasserstorm & Sons	40,000
Norandex	26,000
Perception Motorsport, Inc.	20,000
Phoenix Recycling, Inc.	100,000
Regents Point Townhomes	97,000
Shape Corporation	36,000
Tosca Services	75,000
Toys R Us / Babies R Us	34,500
Uncle Bob's Self Storage	21,343
Van Rob Dallas, Inc.	94,000
William's Collision Repair	40,000



# 2014 Monthly Events

## Direct Connect

Garland Chamber of Commerce  
8 - 9 a.m.  
Third Thursday of the Month

January 16  
February 20  
March 20  
April 17  
May 15  
June 19  
July 17  
August 21  
September 18  
October 16  
November 20

---

## Luncheons

The Atrium at the Granville Arts Center  
11:30 a.m. - 1 p.m.  
Last Monday of the Month

February 24  
March 31  
April 28  
May 19  
June 30  
July 28  
August 25  
September 29  
October 27  
November 17

---

## WBe Luncheons

Hyatt Place Dallas Garland  
11:30 a.m. - 1 p.m.  
First Wednesday of Every Other Month

February 5  
April 2  
June 4  
August 6  
October 1

# Annual Events

## 82nd Annual Banquet

The Atrium at the Granville Arts Center  
6 - 9 p.m.  
Thursday, January 30, 2014

## 5th Annual Business Expo

Curtis Culwell Center  
9 a.m. - 2 p.m.  
Thursday, April 17, 2014

## 30th Annual Golf Tournament

Firewheel Golf Park  
Tee Time: 9 a.m.  
Friday, September 12, 2014

## 8th Annual WBe Holiday Extravaganza

Location to be Announced  
5 - 7:30 p.m.  
Thursday, November 20, 2014

## 27th Annual Prayer Breakfast

The Atrium at the Granville Arts Center  
7:30 - 9:30 a.m.  
Thursday, December 4, 2014



To keep up with all Chamber and member events, go to the "Events" page at [www.garlandchamber.com](http://www.garlandchamber.com).

For questions regarding information represented in the 2013 Annual Report, please contact Jenna Dickson at [jenna.dickson@garlandchamber.com](mailto:jenna.dickson@garlandchamber.com) or (469) 326-7412.

# THANK YOU

FOR  
HELPING  
MAKE 2013  
A SUCCESS!



## GEDP INVESTORS

Alexander Mobility//Atlas Van Lines  
American National Bank of Texas  
(Skillman St. & Sachse Locations)  
Atlas Copco  
Atmos Energy Corporation  
Audubon Village Shopping Center  
Bank of Texas  
Baylor Medical Center at Garland  
Cencor Realty Services  
Cooper Concrete Co.  
Daisy Brand  
Ecolab, Inc.  
Employee Solutions  
Executive Press, Inc.  
Galt Medical Corp.  
Garland Heating and Air Conditioning  
GCA Services Group  
General Dynamics OTS  
Huber Prater & Henson, P.C.  
IDQ  
Inwood National Bank  
Jupiter Chevrolet  
KARLEE, Co.  
Kraft Foods  
MAPEI Corp.  
Massey Cadillac  
Micropac Industries, Inc.  
Milestone Electric, Air & Security  
National Oilwell Varco Brandt  
NPL Construction Co.  
O.D. Mayor Foundation  
Oncor Electric Delivery  
Plastipak Packaging, Inc.  
Primera Companies, Inc.  
Richland College  
Silver Line by Andersen  
Stan Luckie & Associates, Inc.  
The Archer Company  
Veritex Community Bank  
Verizon  
Wells Fargo

## BOARD OF DIRECTORS

Liz Beauchamp, Atmos Energy  
Linda Braga, The Braga Law Firms  
Chad Brumit, KARLEE Co.  
Raul Cantero, National Circuit Assembly  
Dr. Jean Conway, Eastfield College  
Donna Ditmars, Kraft Foods, Inc.  
David Dunavin, General Dynamics OTS  
Dr. Kay Eggleston, Richland College  
Phil Elmore, Christian Care Center  
Alyson Archer Goodhartz, The Archer Company  
Ralph Heins, Primera Companies, Inc.  
Eva Hummel, Baylor Medical Center at Garland  
Mark King, Micropac Industries, Inc.  
Scott McMurdie, Shea & McMurdie Financial  
Chad Powell, Plastipak Packaging  
Jerry Prater, Huber, Prater, & Henson, P.C.  
Dr. Thomas A. Reed, Thomas A. Reed, DDS  
Tom Sadler, Business Consultant  
Craig Scheef, Texas Security Bank  
Kevin Slay, City of Garland  
Jim Smith, Batteries Plus  
Marisol Trevizo, Pilar Funeral Home  
Priscilla Wilson, City of Garland  
Barry Young, Oncor Electric Delivery



# Garland Chamber of Commerce

**The Connecting Source™**